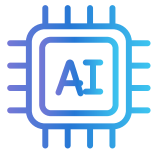




# Microsoft Copilot

*(formerly Bing Chat Enterprise)*

# Employees want AI-powered chat, but companies have data security and privacy concerns



92% of technical professionals and business decision makers say they **have used or tried an AI tool or service**



Employees using AI-powered chat through public web services are putting **corporate data at risk**



Some large corporations **discouraged employees from using AI tools** because of data leakage risks

# Empower users to do their best work, safely



**Elevate creativity and  
productivity with AI tools**



**Protect  
business data**

# Copilot

with commercial data protection

Generally available

## When signed in with Entra ID:



**Chat data is not saved**

Chat prompts and responses are discarded.



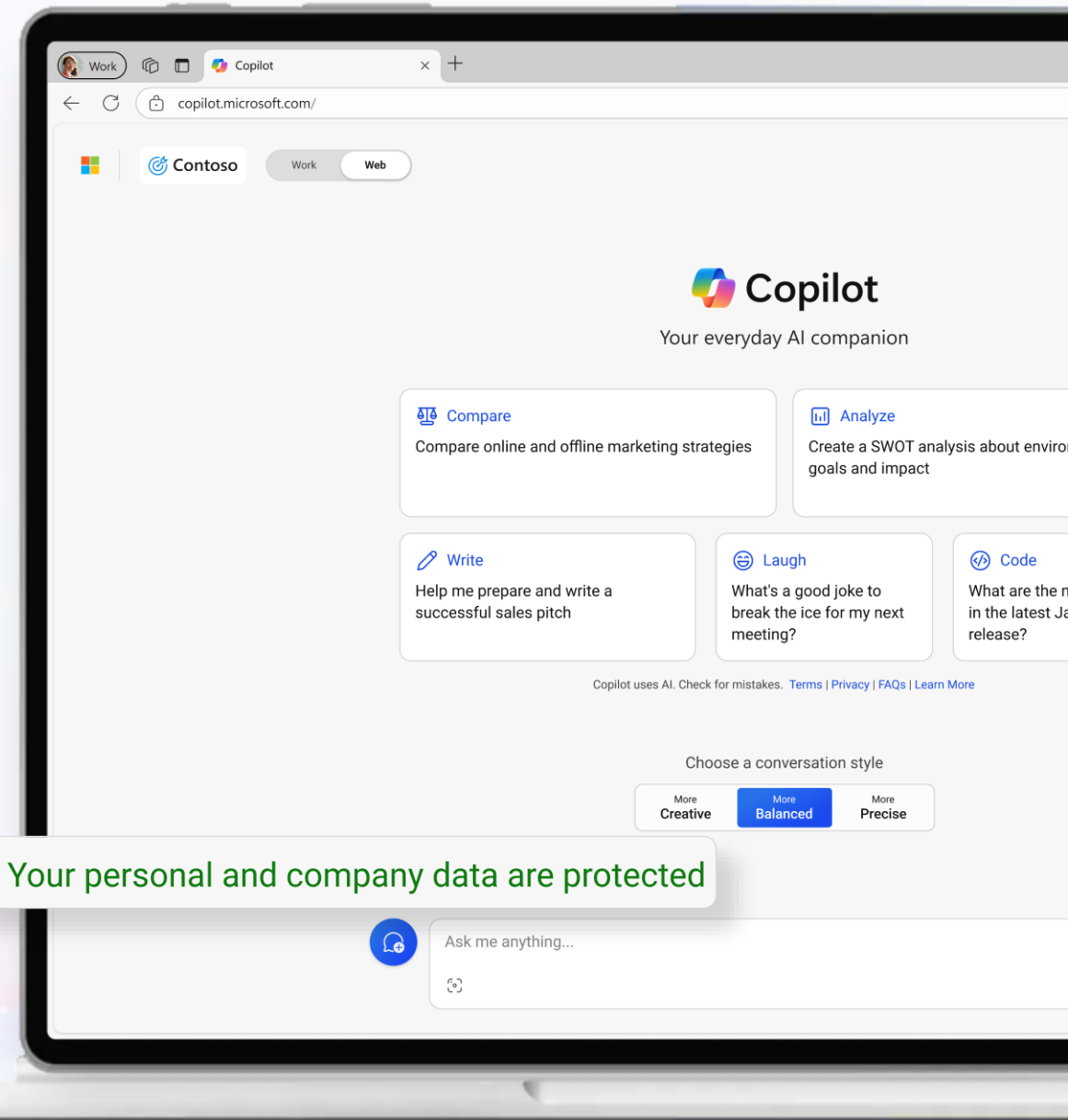
**No eyes-on access**

No one at Microsoft can view your data.



**Data is not used to train the model**

Chat data is not used to train the large language models used by AI.



# Why Copilot?

It's powerful and protective

## Access to powerful AI models



- Built on GPT-4 and DALL-E 3, the advanced AI models
- No additional cost with Entra ID

## Transparent and current



- Citations provided for each response
- Responses sourced with up-to-date information

## Commercial data protection

## Business data is protected



- Included with Entra ID
- Chat data is not saved
- No eyes-on access
- Chat data is not used to train the model

# Putting both tools to work for your organization

Copilot



Current web data

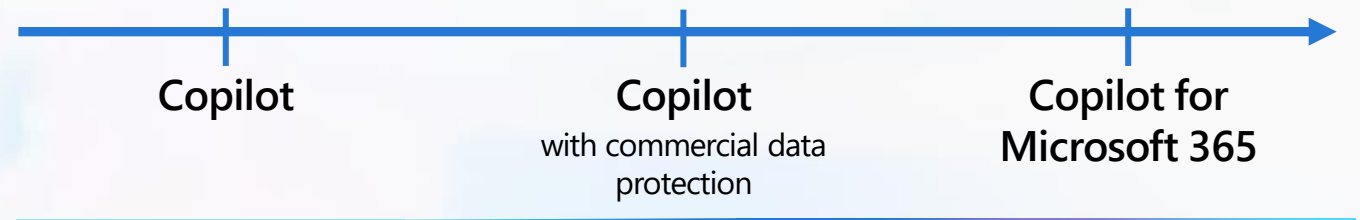
Copilot for Microsoft 365



Your company data

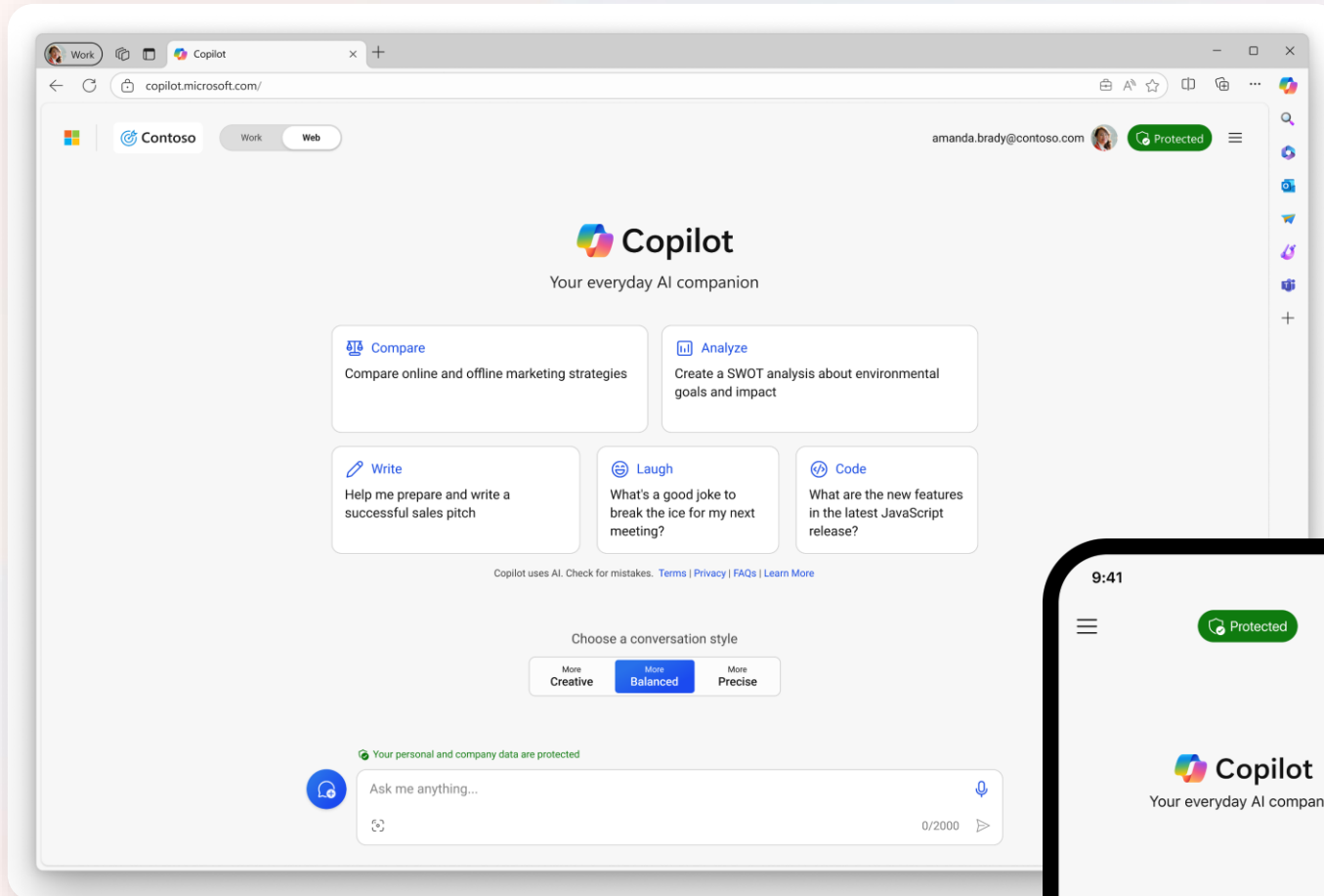
# Understanding the AI options

## AI adoption



	Personal	Work	Work
GPT Large Language Model	✓	✓	✓
<i>Web</i> Grounding (AI-powered Web Search, Answers & Content Generation)	✓	✓	✓
Commercial Data Protection		✓	✓
Microsoft 365 Enterprise Security, Compliance & Privacy			✓
Microsoft 365 Graph Grounding ( <i>Work</i> Content & Context)			✓
Integration with Teams, Outlook, Word, Excel, PowerPoint and OneNote			✓
Licensing	Public and free	Available with eligible Microsoft 365 licenses	\$30/user/month

# Commercial data protection is available anywhere Copilot is accessed

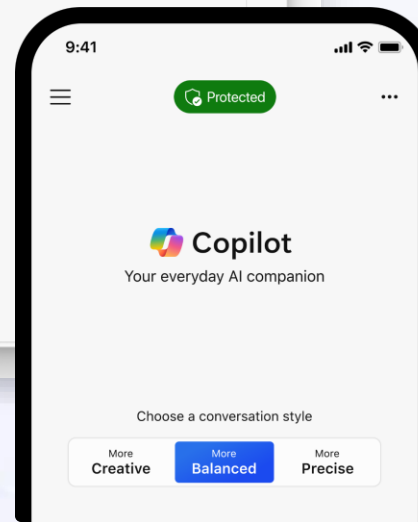


## Available on desktop via:

- Copilot.Microsoft.com
- Windows
- Microsoft Edge
- Microsoft Bing

## Available on mobile via:

- Copilot app: Microsoft Entra ID sign-in support is coming soon
- Edge app
- Bing app
- Microsoft 365 app



*Copilot.Microsoft.com on desktop and mobile*



# More users to get commercial data protection over time

Users signed into Copilot with their eligible work or school accounts can access commercial data protection at no additional cost. Learn more about eligibility at [aka.ms/Copilot/Eligibility](https://aka.ms/Copilot/Eligibility)

## Current Copilot eligibility

- Microsoft 365 E3, E5
- Microsoft 365 F3
- Microsoft 365 and Office 365 A1/A3/A5 faculty and higher education students aged 18 and above
- Business Standard
- Business Premium



## Future eligibility with Entra IDs

- Office 365 E5, E3, E1 Plus, E1, and F3
- Microsoft 365 F1
- Microsoft 365 Apps for Enterprise
- Microsoft 365 Apps for Business
- Microsoft 365 Business Basic

Copilot with commercial data protection will be available to all Entra ID users in the future. Timing to be announced

*\*Government users are not included at this time*

# Increase adoption with customizable resources

In addition to English (U.S.), select assets in the adoption kit are available in 9 languages



**Name Change Template**  
for IT admins



User Training  
**PowerPoint with UI Deck**



Company-Wide Announcement  
**Communication Templates**



Single-Page  
User Scenario **Tip Sheet**



**Messaging Series** for  
communication channels



Single-Page  
**Interactive Guide**

Download the full kit at [aka.ms/Copilot/StarterKit](https://aka.ms/Copilot/StarterKit)

# Next Steps



## Copilot

### Start using Copilot

Eligible Microsoft 365 and Office 365 users can start using Copilot with commercial data protection today by visiting [copilot.microsoft.com](https://copilot.microsoft.com) and signing in with their Microsoft Entra ID.

### Resources

- Website: [aka.ms/Copilot/Website](https://aka.ms/Copilot/Website)
- Video for IT admins: [aka.ms/Copilot/MechanicsVideo](https://aka.ms/Copilot/MechanicsVideo)
- Documentation: [aka.ms/Copilot/Docs](https://aka.ms/Copilot/Docs)
- FAQ: [aka.ms/Copilot/FAQ](https://aka.ms/Copilot/FAQ)
- Adoption kit: [aka.ms/Copilot/StarterKit](https://aka.ms/Copilot/StarterKit)



# Copilot

Your everyday AI companion

